



We are
recording &
will share the
video on
YouTube



We'll begin
at **10:00am**



Subscribe!
[Youtube.com/
waOSPI](https://www.youtube.com/waOSPI)



Graduation
Equity
Webinar
Series

Artificial Intelligence Hacks for Leadership Teams



Washington Office of Superintendent of
PUBLIC INSTRUCTION

Vision

All students prepared for post-secondary pathways, careers, and civic engagement.

Mission

Transform K–12 education to a system that is centered on closing opportunity gaps and is characterized by high expectations for all students and educators. We achieve this by developing equity-based policies and supports that empower educators, families, and communities.

Values

- Ensuring Equity
- Collaboration and Service
- Achieving Excellence through Continuous Improvement
- Focus on the Whole Child

Equity Statement

Each student, family, and community possesses strengths and cultural knowledge that benefits their peers, educators, and schools.



Washington Office of Superintendent of
PUBLIC INSTRUCTION

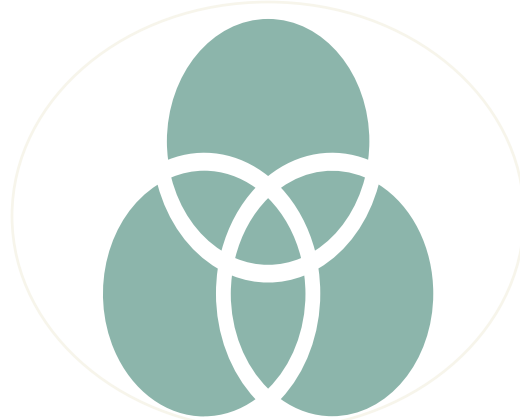
I am on Squaxin, Cowlitz, Coast Salish, & Nisqually Land



Equity Pause – Why Are We Doing This?



Who will my decision affect?



What is my locus of control?



Which actions will have the largest impact?



What's a step I can take right away?



Objectives

- Gain awareness of **common concerns** around using AI and how to address them
- Learn ways that AI can **support instruction** and **streamline leadership team activities**
- Learn a system for asking thoughtful **prompts** you can use
- Learn from **school leaders** that are using AI
- Check out **resources** to help your school think whole child this school year



Presenters



Kefi Andersen

Assistant Director of Student Support
Systems

OSPI

kefi.andersen@k12.wa.us



Bre Urness-Straight

Director of Educational Technology

OSPI

bre.urness-straight@k12.wa.us



Jethro Jones

Founder

Transformative Principal

Jethro@transformativeprincipal.com

We want to know about you!



Who's here?



What grade band do you work with the most?



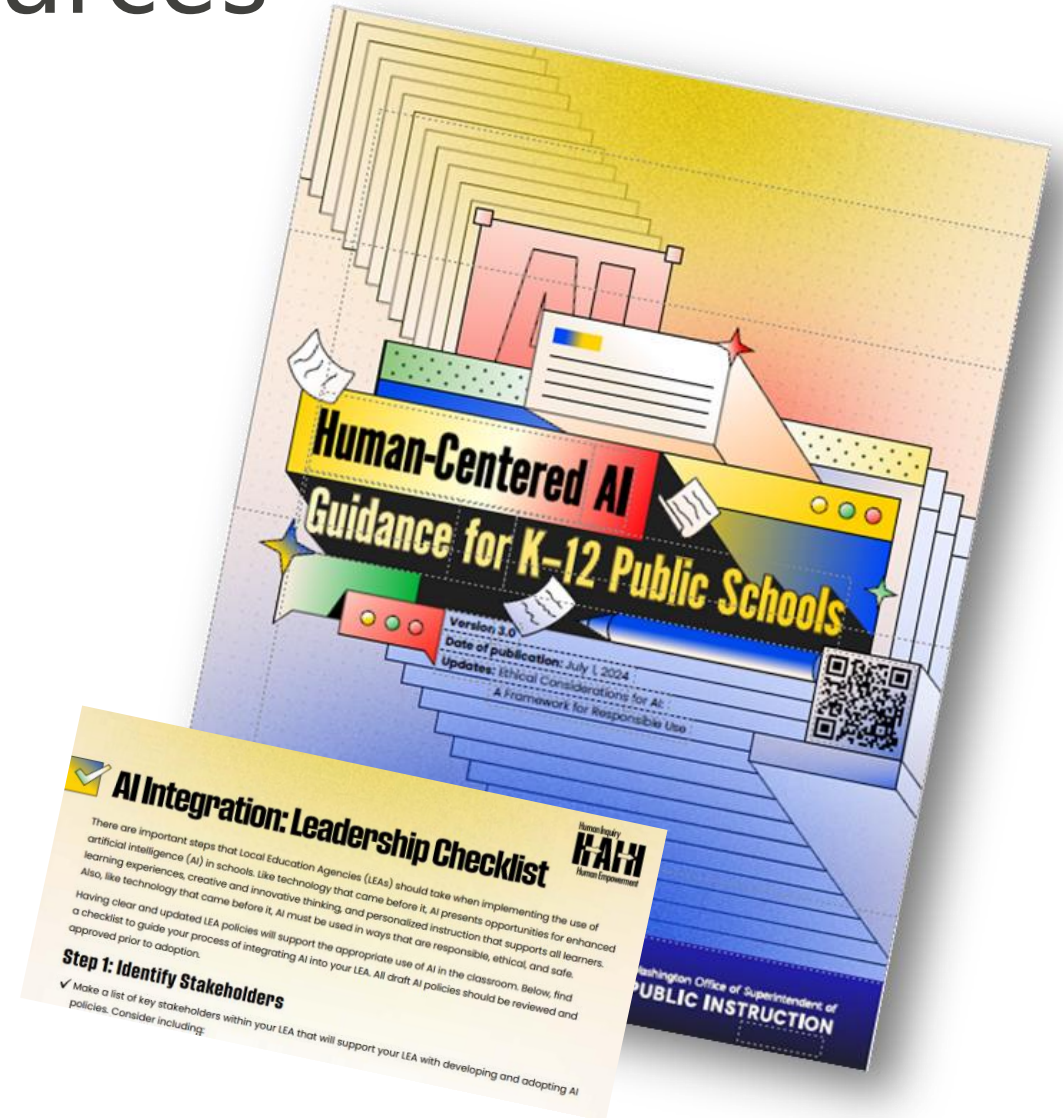
How familiar are you with our topic?



OSPI Guidance & Supports

OSPI Guidance & Resources

- Addresses **common concerns** around using AI
- Provides practical and immediately useful **resources**
- Resources to **support instruction** and **streamline leadership team activities** with AI
- Learn about how to successfully integrate AI through transparent implementation
- Check out **resources** to help your school think whole child this school year



Let's talk policy adaption & adoption:



Where is your district at with
AI policy adaption &
adoption?

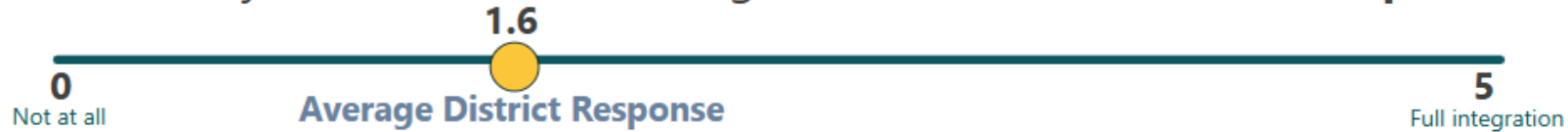


Where are you at with
classroom AI policy adaption
& adoption?

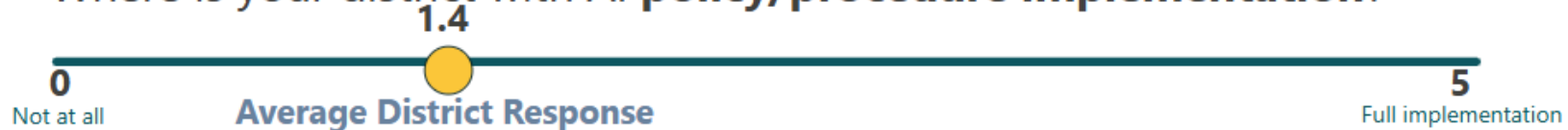
Statewide District Progress

AI Integration, Ranked 0-5

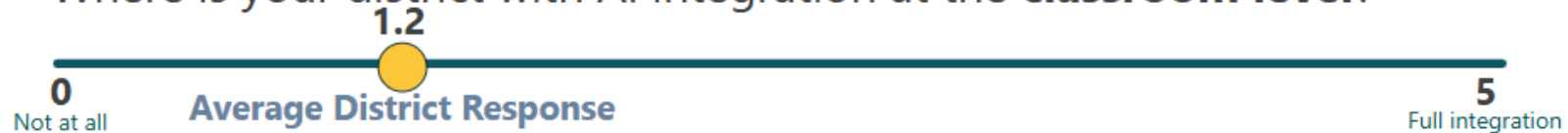
Where is your district with AI integration at the **district leadership level**?



Where is your district with AI **policy/procedure implementation**?



Where is your district with AI integration at the **classroom level**?



What do you see as the barriers to policy adaption or adoption?



Budget



Time



Knowledge



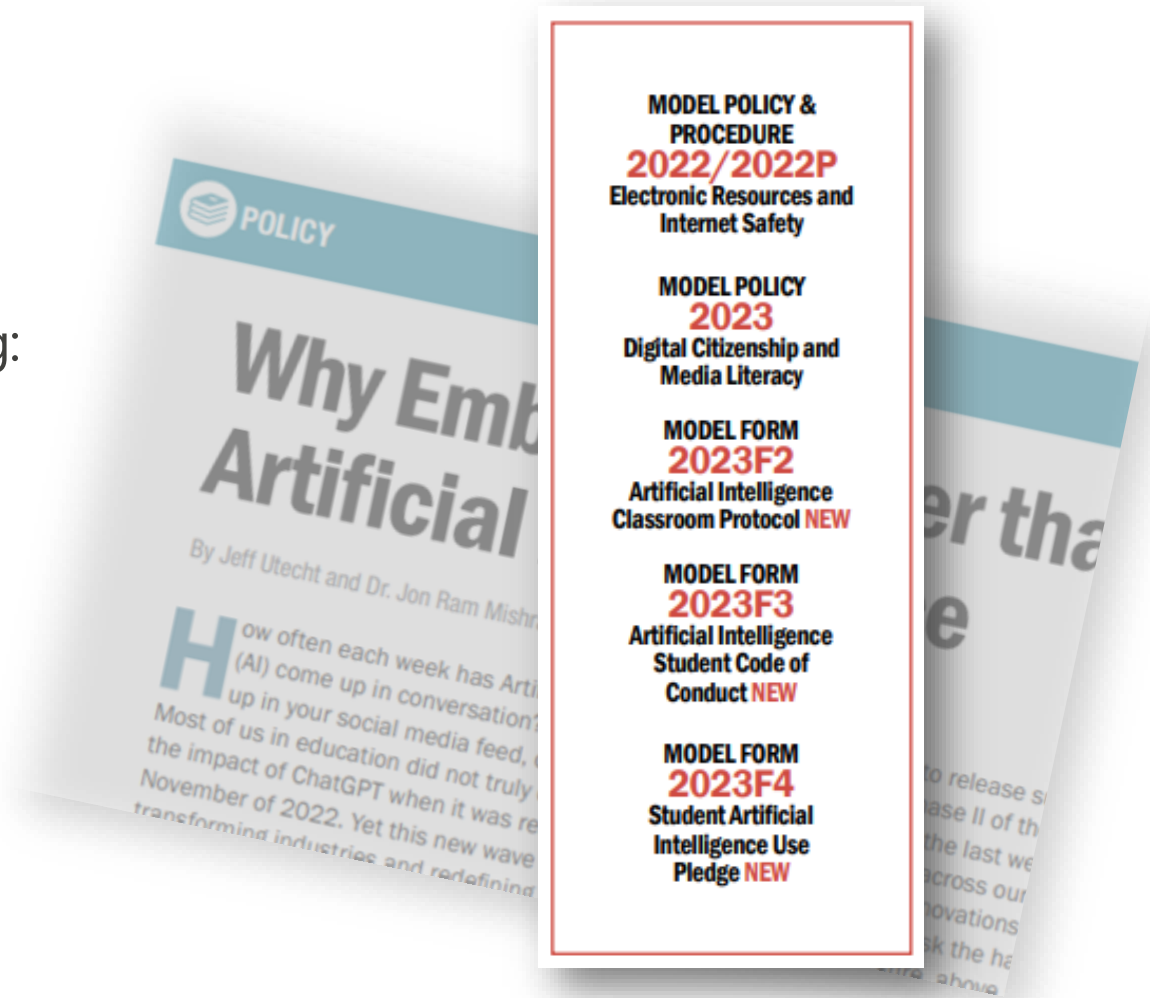
Concerns about AI

Why Embrace Rather than Ban Artificial Intelligence

Why is Policy Adaption/Adoption so Critical? The Impact of AI on Future Education

School board members should start by considering:

1. How can we ensure AI adoption promotes **equity** and **inclusivity** across all student demographics?
2. In what ways can we **support** educators in transitioning to AI-enhanced curriculum development and personalized learning?
3. What **vision** should we implement to prepare students with both the technical skills and ethical understanding required for our future?



Source: [Why Embrace Rather than Ban Artificial Intelligence](#)

Policy Adaption versus Adoption

1. Your district policies are ALREADY fundamentally sound
2. Be transparent and enlist stakeholders in the process
3. Adapt to incorporate considerations and district vision

Why Embrace Rather than Ban Artificial Intelligence:

What School Board Members Should Consider

Revised from "[Why Embrace Rather than Ban Artificial Intelligence](#)" Policy and Legal News WSSDA, March 2024

Role of School Board Members	The Impact of AI on Future Education	Challenges and Ethical Considerations	Playing the Long Game	Your Call to Action
How can we effectively communicate the benefits and address the concerns of AI in a way that builds support?	How can we ensure AI adoption promotes equity and inclusivity across all student demographics?	How can we ensure adherence to data protection laws while implementing AI in schools?	How can we craft AI policies that protect student privacy while fostering innovation?	How can we lead by example in embracing AI to foster innovation and ethical use in our schools and community?
In what ways can we ensure our policies and investments in AI enhance equity and accessibility for all students?	In what ways can we support educators in transitioning to AI-enhanced curriculum development and personalized learning?	What questions should we ask in addressing algorithmic bias in educational AI tools?	What partnerships can we form to enrich our AI education and implementation strategies?	What strategies can we employ to ensure community involvement and support for AI initiatives?
What strategies can we adopt to foster meaningful partnerships that will support the successful integration of AI into our education system?	What vision should we implement to prepare students with both the technical skills and ethical understanding required for our future?	How can we foster a culture of continuous learning among educators and students regarding AI use?	How do we ensure equitable access to AI resources and training across our diverse student body?	How do we maintain open, effective communication to build trust and collaboration during the AI integration process?

From WSSDA

To support your school district regarding student use of artificial intelligence, WSSDA consulted with the AI Advisory Group and OSPI to consider possible policy revisions and supports. In response, WSSDA has revised model policy and procedure **2022/2022P – Electronic Resources and Internet Safety** and revised **2023 – Digital Citizenship and Media Literacy**. Both **2022** and **2023** are Encouraged policies.

Additionally, WSSDA has developed three new forms to support your district. The first new form is **2023F2 – Artificial Intelligence Classroom Protocol**. This form provides sample language for teachers to use in developing their classroom protocols regarding student use of AI. This form is intended to support your teachers but should be customized as needed by individual teachers. Please remember that teachers have the ultimate responsibility to determine the appropriate extent of AI usage in their classroom, including for each individual assignment or project. The second newly developed form is **2023F3 – Artificial Intelligence Student Code of Conduct**. We've developed this form to support your district and building-level administrators. It provides sample language regarding student responsibility connected to AI and suggestions for categorizing AI use as restricted, permitted, or recommended. Lastly, we're offering **2023F4 – Student Artificial Intelligence Use Pledge**. This form provides a sample of a student pledge of acceptable use of AI and is intended to be signed by individual students.



Addressing Concerns

Education Community Engagement

WSSDA Model Policy Adaption/Adoption

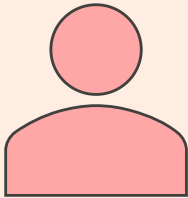

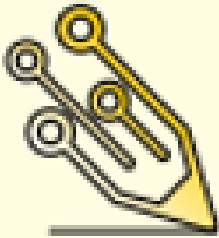


AI Tools

- Free versus paid
- Don't use sensitive data - Personal Identifiable Information (PII)
- H-AI-H: Keep a human-centered approach
- Key benefit: supports personalized and inclusive learning
- Learn out loud...Exploration time is critical ([ChatGPT](#), [Gemini](#), CoPilot)



OSPI AI Guidance:

5 Step Scaffolding Scale

Level 1 No AI Assistance	Level 2 AI -Assisted Brainstorming	Level 3 AI-Supported Drafting	Level 4 AI-Collaborative Creation	Level 5 AI as Co-Creator
				
<p>No AI tools are used at any point. Students rely solely on their knowledge and skills.</p>	<p>AI tools can help generate ideas. Final content must be created by the student without direct AI input. AI assistance must be cited.</p>	<p>AI can help with drafting initial versions. The final version must be significantly revised by the student. Clear distinction between AI input and student's contributions.</p>	<p>AI-generated content can be included. Student must critically evaluate and edit AI contributions. AI usage must be transparent and cited.</p>	<p>Extensive use of AI in content creation. Student provides a rationale for AI use and ensures original thought. Work adheres to academic integrity with proper citations.</p>

Professional Learning Opportunities

- [AI Summit](#) (West side): February 3 – 5, 2025
 - [Registration](#)
- AI Learning in pdEnroller
 - [AI Innovators Modules for Educators](#)



Enroll Now in AI Innovators: Trainer Resources Canvas Course

Partner with OSPI, launch an aligned opportunity for educators and integrate AI into your practice. Whether you're a novice or an expert, this course offers a comprehensive journey through AI in education. This training can either be used for self-learning or used to train your entire staff. Provide the beginnings for you or your staff.

The training begins with the application and ethics, prompt engineering, and ends by having the learner create a resource for AI use.



Learn more about each module:

- Module 1: Understanding AI
- Module 2: Exploring AI
- Module 3: Utilizing AI
- Module 4: Adopting AI
- Module 5: Becoming an Innovator for AI

#178518

Nov 20, 2024

[AI for Everyday Efficiency](#)

(WWAL0164)

ESD 123 Staff Training Opportunity

4 Clock Hours

ESD 123

Free

[Register](#)



Artificial Intelligence Time Savers for Teams



Jethro Jones

Founder

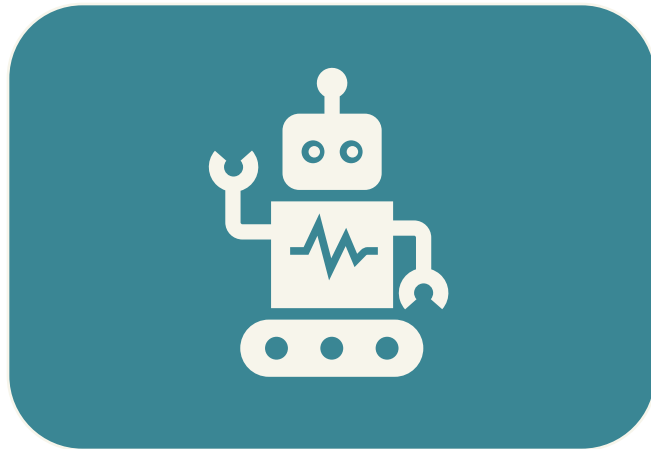
Transformative Principal

Jethro@transformativeprincipal.com

Problem – How Do I Connect with People



Form

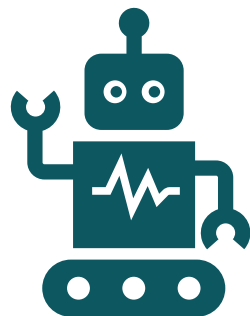


Automated
Response



Personal
Response

Experience AI



<https://jethro.site/ospi>



Washington Office of Superintendent of
PUBLIC INSTRUCTION

When you think of AI,
which emotion do you
feel the most?



Relieved



Inspired



Frustrated



Fearful

One Thing to Remember



It's

About

People!



What AI Is and What it Isn't

Ethan Mollick on WHEN to use AI

Knowing when to use AI turns out to be a **form of wisdom**, not just technical knowledge. Like most wisdom, it's somewhat paradoxical:

AI is often most useful where we're already expert enough to spot its mistakes, yet least helpful in the **deep work that made us experts** in the first place.

It works best for tasks we could do ourselves but shouldn't waste time on yet can actively **harm our learning** when we use it to skip necessary struggles.

Solve Real Problems



Data



Communication



Elevating Voice



Solve Real Problems: Data



Interrogate data in a secured place.



Research your student handbook: [Example](#)



Brainstorming partner for a real problem: [Example](#)



Partner for developing a specific project: [Example](#)



Solve Real Problems: Communication



Identify common areas where people will be upset with a communication

Translate so much faster (and on the fly)

Improve your writing and style

Solve Real Problems: Elevating Voice

May 1 I turn 18

Fun run my family and friends they go to my fun run they love me - donate a money for the Shiners hospital \$3000 dollars

Gradation I am really Gradation at Ferris high school

Singles ward - my calling greeter, go go to family home evening to institute

Speaking at Gonzaga - I was a guest speaker at Gonzaga University talking about my experience in school. Thanks Mrs Jacobson for inviting me. It was so fun. Next time I want a limo! I want to go there everyone cheer my name Katya Katya then tee my fans they love me so much




First Day of Kindergarten



High School Graduation





Do you have
any questions?

Add them to the **Q&A**
Upvote the questions you like



What Does it Look
Like to Do This Work?

Panelists

- Add your questions to the **Q & A**
- **Upvote** questions you want answered most



Jeff Utecht

Educational Consultant &
Podcaster



Aaron Makelky

History Teacher & AI
Integration Consultant

Share What You Learned



- Discuss your ideas with leadership



- Share ideas with your Professional Learning Community



- Lead a discussion with students





Resources

Resources

Funding

- [Unlocking Federal & State Program Funds to Support Student Success](#)

Tools & Videos

- [Read & Subscribe](#) to the Engage Newsletter

Websites

- [OSPI AI page](#)
- [WSDDA Guidance](#)
- [Jethro's Site](#)
- [Get Student Facing AI Content for Teachers](#)

People

- [Connect with OSPI staff](#)



Bulletin & Tools Available

[OSPI Guidance and Resources](#)

["Why Embrace Rather than Ban Artificial Intelligence"](#) article

[TeachAI Tracking Document](#) (includes AI Literacy Guidance tab)



Next Month

February 12

10:00 a.m. – 11:30 a.m.


**Culturally Responsive
Practices & Policies that
Help Students Engage**



Evaluation



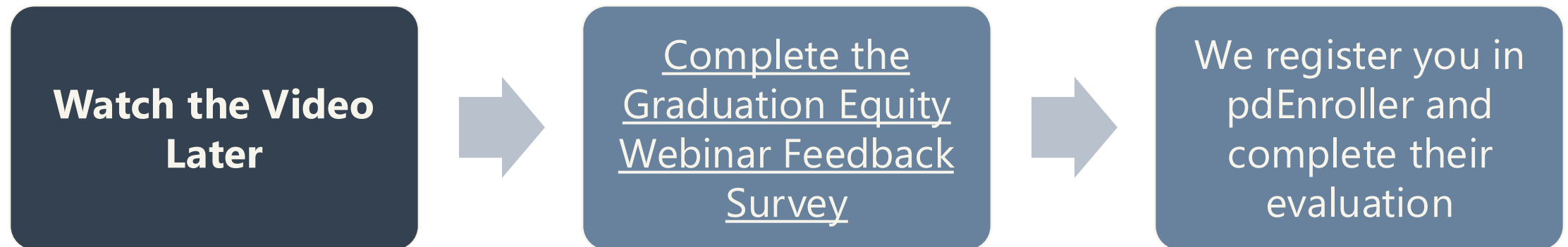
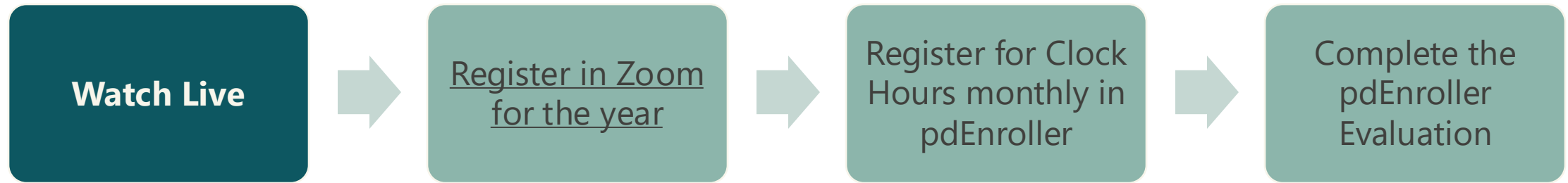
What
worked?



What could
we adjust?



Do You Need Free Equity Clock Hours?



Email Ronnie.Larson@k12.wa.us



Washington Office of Superintendent of
PUBLIC INSTRUCTION

Connect with us!



k12.wa.us



facebook.com/waospi



instagram.com/waospi



twitter.com/waospi



youtube.com/waospi



medium.com/waospi



linkedin.com/company/waospi